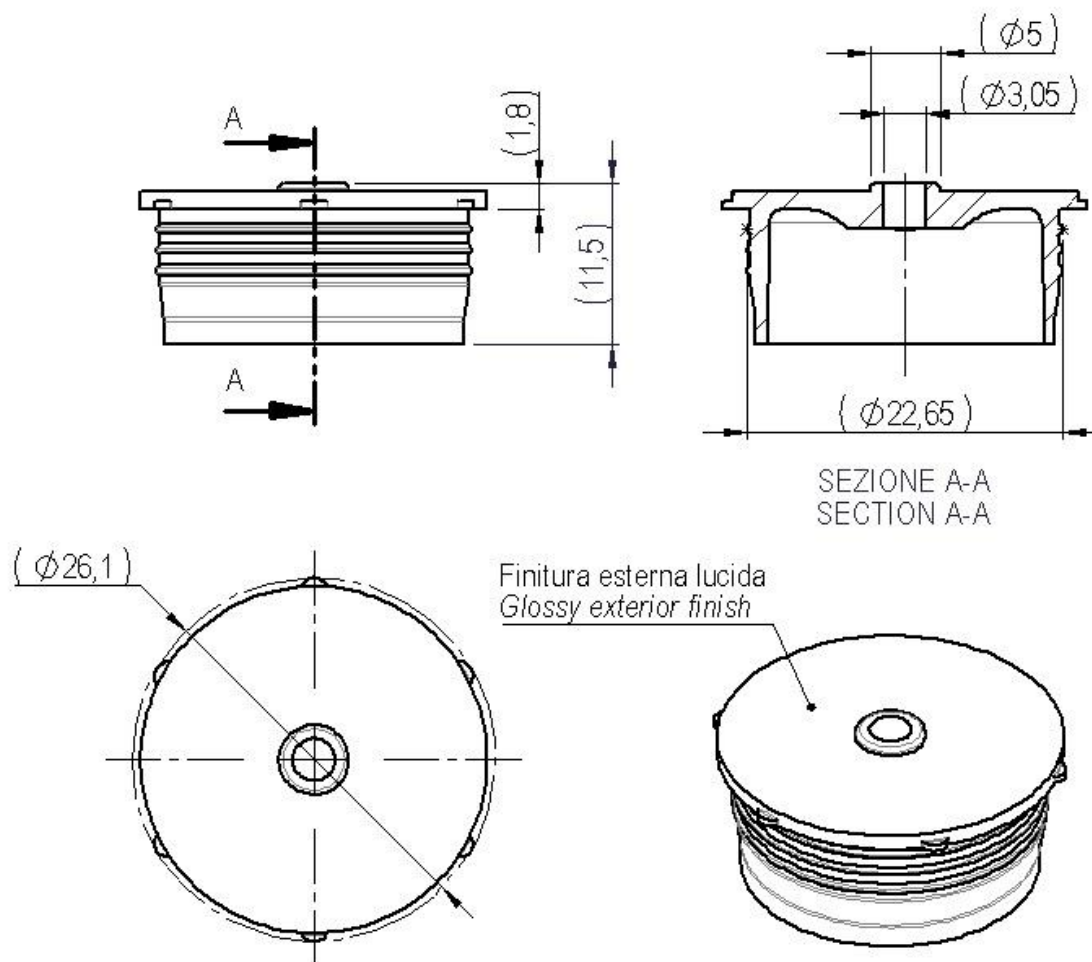



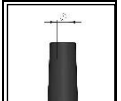


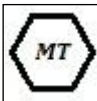



**Art. cod. XR01172**  
**Descrizione / Description**  
**Dropper piano ø3**  
**Flat Dropper ø3**



**Tabella dati tecnici / Technical data table**

							
ø Esterno (mm)	ø Aggancio a flacone (mm)	ø Esterno punta (mm)	ø Erogazione (mm)	H - Totale (mm)	Hp - Parziale (mm)	Materiale	Peso (g)
ø External (mm)	ø Bottle engagement (mm)	ø Outer tip (mm)	ø Delivery (mm)	H - Total (mm)	Hp - Partial (mm)	Material	Weight (g)
26,10	22,65	5,00	3,05	11,50	1,80	LDPE 4	1,30 ±0,10

Il peso indicato è puramente indicativo e non valido ai fini CONAI.

The weight indicated is purely indicative.

## Tabella dati imballaggio-spedizione / Table packing and shipping details

Scatola standard (cm)	Sacchetto	Quantità per scatola	Quantità per pallet	Pallet (cm)
Standard box (cm)	Bag	Pcs box	Pcs pallet	Pallet (cm)
60x40 H:33,5	PE Food contact	4000	48000	120x80 H:112



## Stoccaggio / Storage

Conservare i prodotti nella loro confezione originale in un luogo pulito, fresco e asciutto.

*Store the products in their original packaging in a clean, cool and dry place.*

Temperatura / Temperature : **5÷30°C**

Umidità / Humidity : **45÷75%**

Conservare i prodotti a temperatura ambiente (**20°C±5**) per **48 ore** prima dell'uso sulla macchina confezionatrice.

*Store the products at room temperature (20°C±5) for 48H before using on packaging machine.*